

Internet Explorer Browser Security Settings

Overview

The information below should resolve any security issues on our website when using Internet Explorer browser, version 6 or later.

'Security Settings' is a general term for the rules your browser follows when deciding what it will allow websites to do. These are in place to prevent malicious sites from making changes to your PC without your knowledge.

Most major websites including ours adhere to the default settings for your browser. However, if your security settings are set higher than the default, they may prevent certain web pages from displaying correctly, or possibly prevent them from displaying at all.

If you continue to experience issues after completing the steps below, or would like one of our Customer Service Advisors to assist you with making these changes, please refer to the Contact Us information on our website by selecting the 'Contact Us' button.

Alternatively, you can email support@customerservices365.com or call +44 (0)1782 684757.

Accessing Internet Explorer Security Settings

- 1a) Close any existing Internet Explorer windows.
- 1b) Open a new Internet Explorer window and ensure you are on a website other than bet365.
- 1c) Click on 'Tools' on the top menu bar, then click 'Internet Options...' as shown below.

Internet Explorer 6



Internet Explorer 7

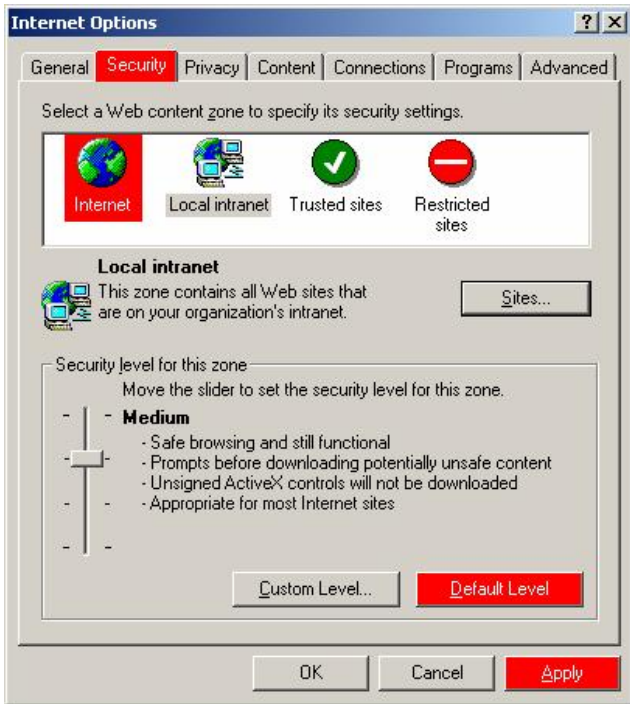


- 1d) This will then open the 'Internet Options' control panel.

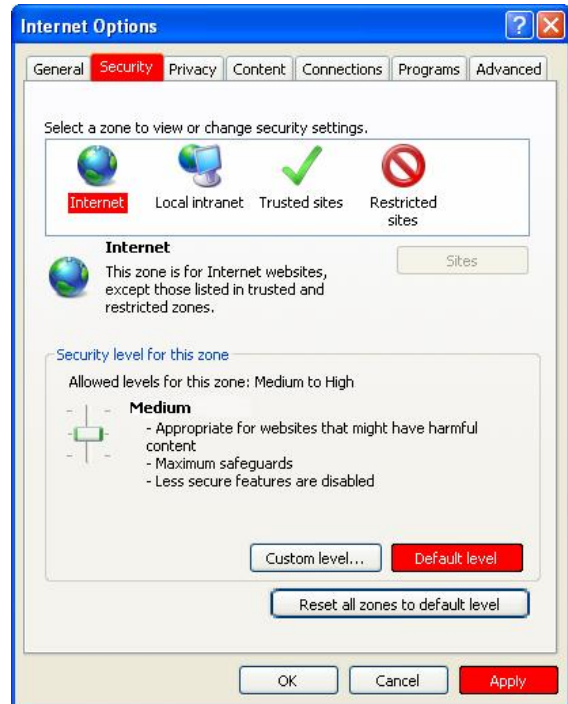
2a) Select the 'Security' tab, then click on the 'Internet' globe icon.

2b) Click on the 'Default Level' button and then 'Apply'.

Internet Explorer 6



Internet Explorer 7



3) Now close all internet browser windows that are currently open and reopen a new browser window, type in our website address and login to your account. You should now be able to browse our website without issue.

- If you continue to experience problems, please contact one of our Customer Service Advisors to assist you. Refer to the contact us information on page 1 of this document.